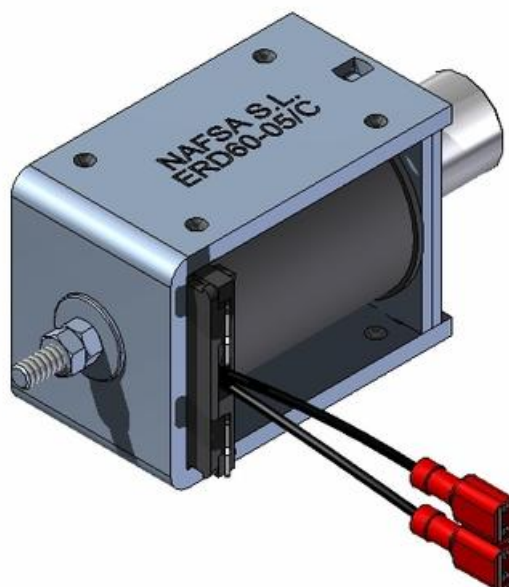




NAFSA - ERD SERIES

ERD60-05/C

- Double coil for 100% duty cycle
- Class B winding (130°C)
- High starting force
- Up to 440N force
- Customer specific version available



PRODUCT DESCRIPTION

The ERD series feature a double coil. One of them with a low resistive value (pulse coil) and the other one with high resistive value (holding coil).

It is used when a 100% duty cycle and a huge force at the beginning of the stroke are needed.

Please see PDF below for full details.

TECHNICAL DATA

Cycle duration	180 s
Function	pull/push
Insulation class	B (130°C)
IP class	IP00
Total weight	720 g
Voltage ac max	230 V
Voltage ac min	110 V
Voltage dc max	125 V
Voltage dc min	24 V
Voltage type	AC, DC

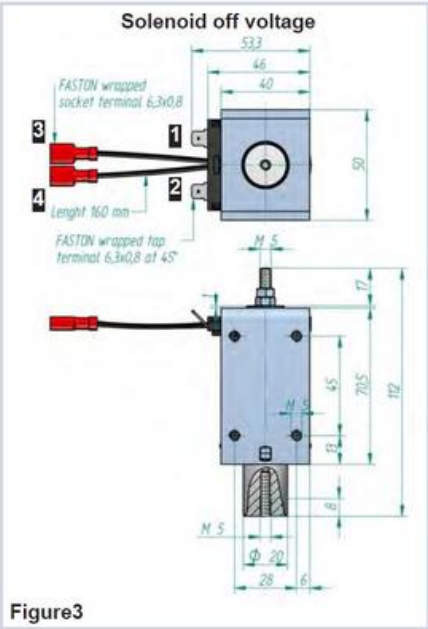


Chart 2	Duty cycle ED(%)				
	20	15	10	5	3
	Magnetic Force Fm (N)				
Stroke "s" (mm)					
25	6	9	13	24	33
20	8	13	18	33	46
15	11	19	25	44	61
10	18	28	36	64	88
5	36	56	74	137	140
3	63	94	114	162	188
1	196	235	259	263	288
0	378	390	411	436	440